



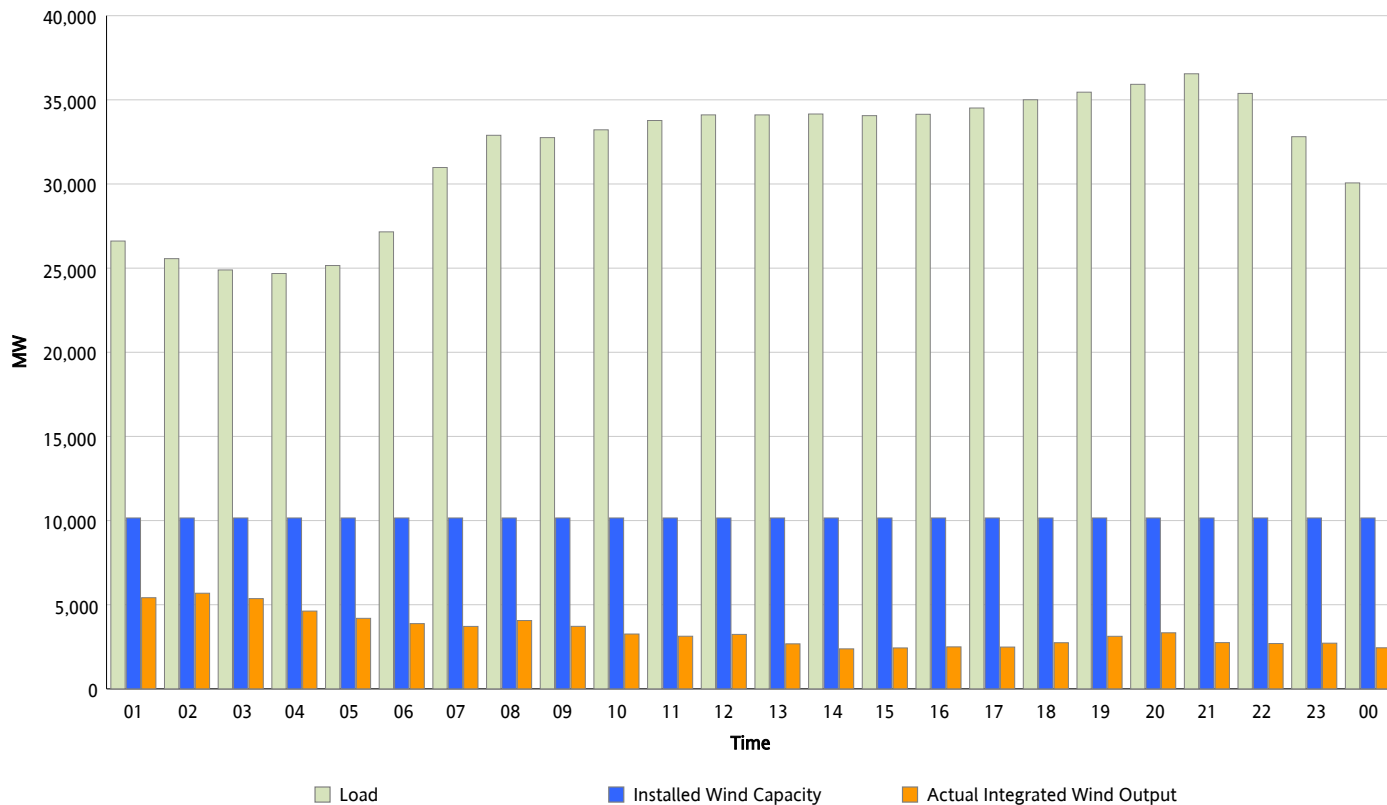
ERCOT Grid Operations

Wind Integration Report : 04/03/2013

Peak Load	36,549 MW
Load Peak Hour (HE)	21
Wind Over Peak	2,749 MW
Wind Record 02/09/13	9,481 MW
Max Wind Value*	5,886 MW
Wind Peak Time	01:17
Wind Integration %	22.85 %

Hourly Average Actual Load vs. Actual Wind Output

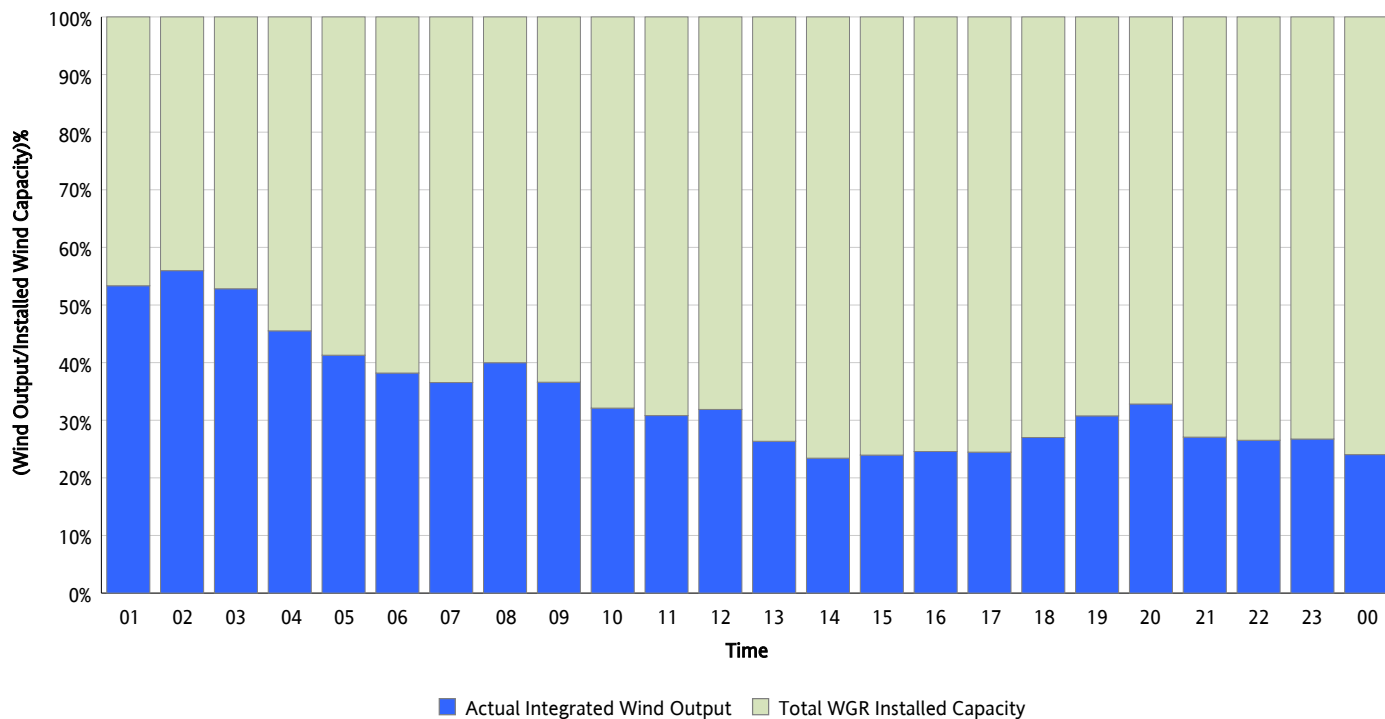
04/03/2013



* Wind Record and Wind Max represent instantaneous values and the rest of the values are integrated over the hour

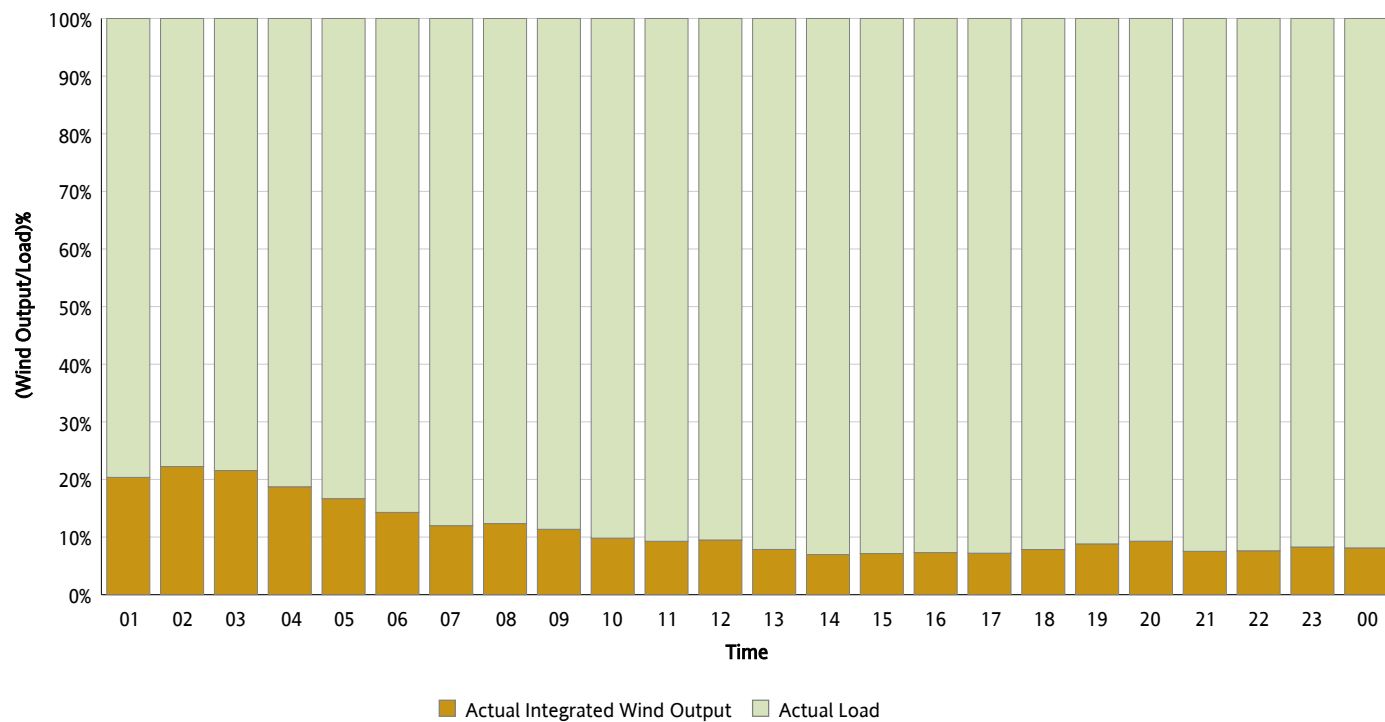
Actual Wind Output as a Percentage of the Total Installed Wind Capacity

04/03/2013



Actual Wind Output as a Percentage of the ERCOT Load

04/03/2013



ERCOT Load vs. Actual Wind Output

03/27/2013 - 04/03/2013

